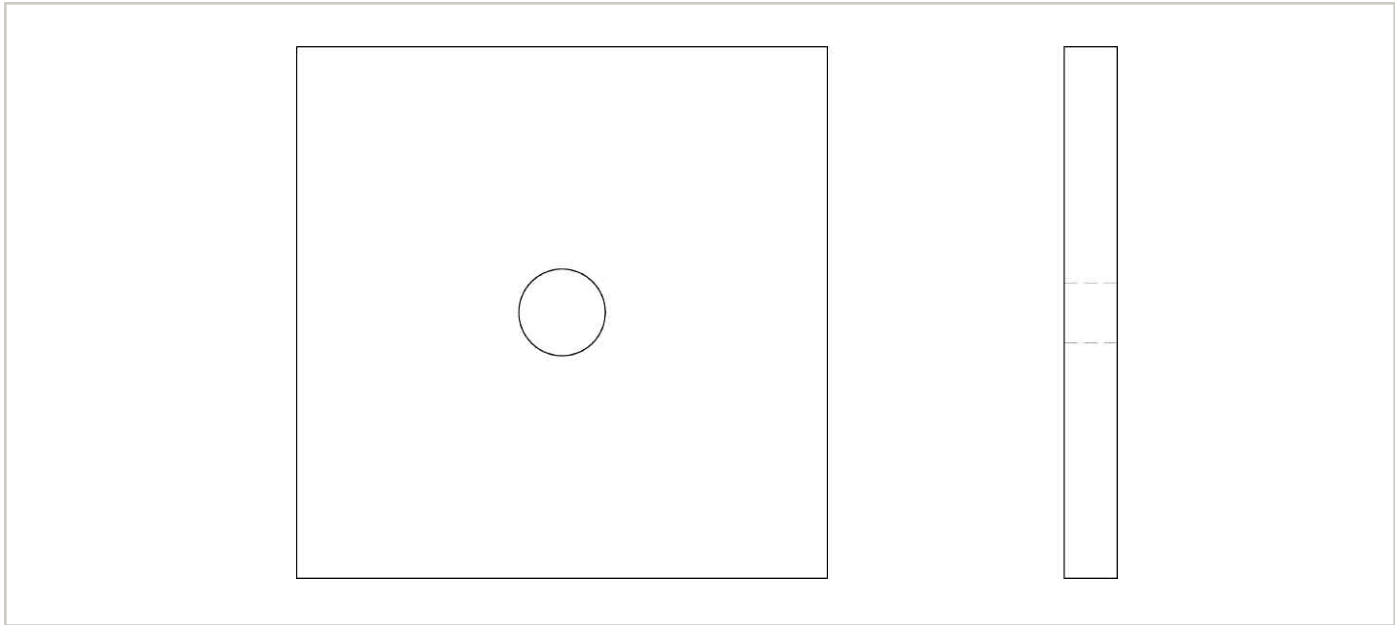
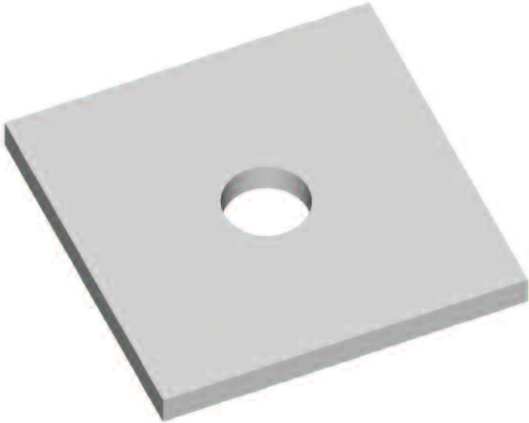


# CW-4 Flat Washers



The CW-4 Flat Washers are manufactured from high carbon flat steel plate and are designed to provide the required bearing against the form members. Flat Washers are available in many sizes in both standard and heavy versions. Refer to the table below for dimensions.



CW-4 FLAT WASHER DATA			
Standard Washer		Heavy Washer	
Bolt Dia.	Size	Bolt Dia.	Size
1/2"	1/4 x 3 x 4	1/2"	1/4 x 4 x 5
3/4"	1/4 x 4 x 5	3/4"	1/2 x 5 x 5
1"	1/2 x 5 x 5	---	---
1-1/4"	1/2 x 5 x 5	1-1/4"	3/4 x 7 x 7