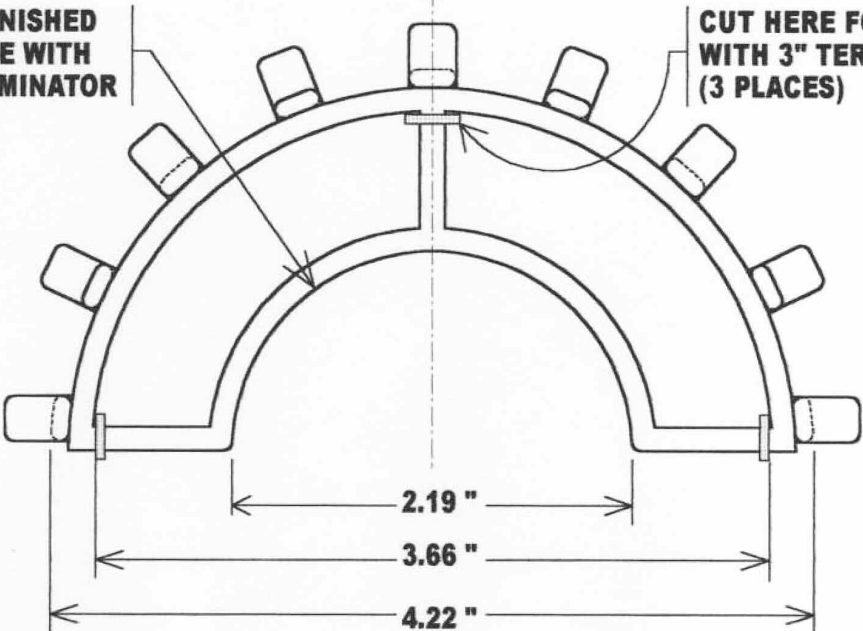


AS-FURNISHED
FOR USE WITH
2" TERMINATOR

CUT HERE FOR USE
WITH 3" TERMINATOR
(3 PLACES)



BRACKET INSERT
PART NO. B230 for use with 2 & 3" Terminator

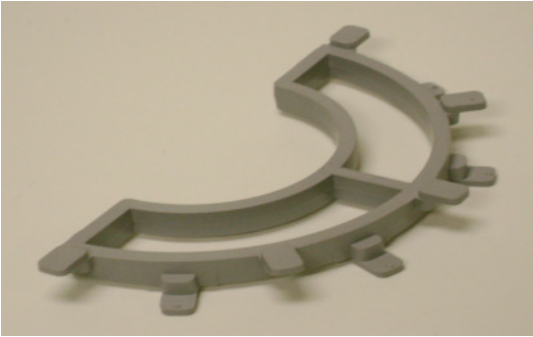
MEADOW BURKE

(877) 518-7665

MeadowBurke.com

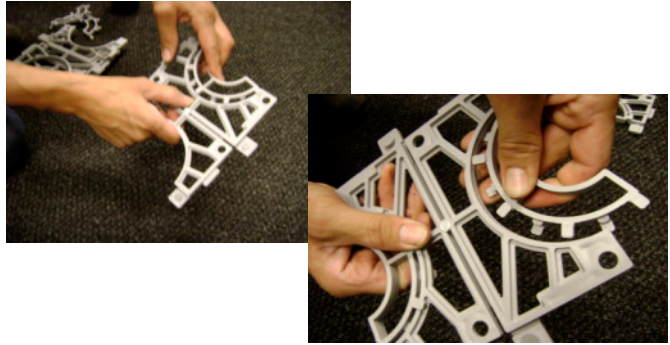
PANEL ASSEMBLY FOR B230 BRACKET

B230 BRACKET



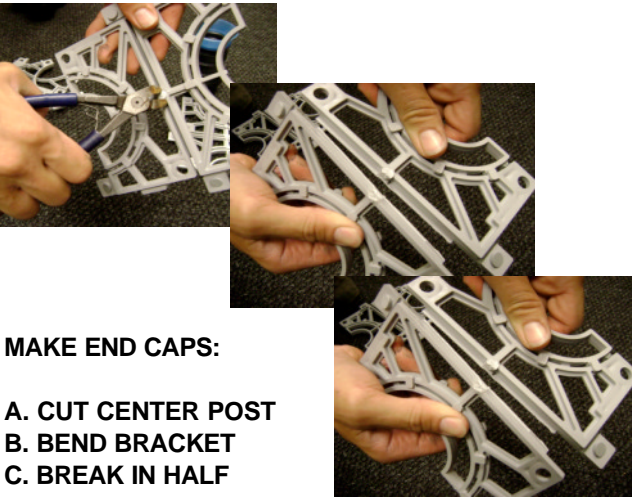
THE BRACKET IS READY FOR A 2" TERMINATOR. THE BRACKET CAN BE CUT FOR USE WITH A 3" TERMINATOR.

STEP 1



SNAP IN THE B230 BRACKET TO A B400 OR B456 BRACKET. CENTER THE TABS AND PRESS UNTIL YOU HEAR IT CLICK. REPEAT FOR THE OTHER SIDE.

STEP 2

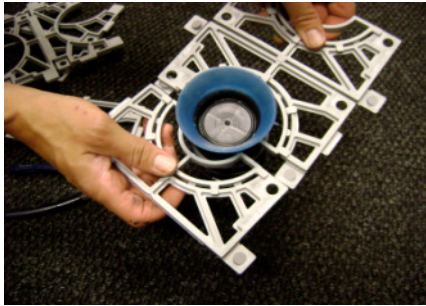


MAKE END CAPS:

- A. CUT CENTER POST
- B. BEND BRACKET
- C. BREAK IN HALF

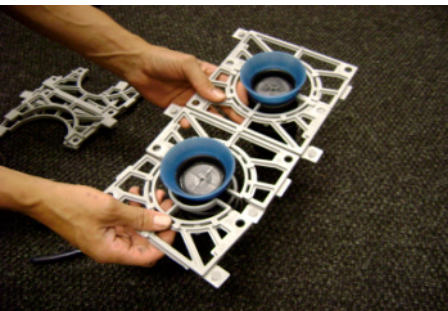
THESE WILL BE USED ON THE ENDS OF THE PANEL STRIPS.

STEP 3



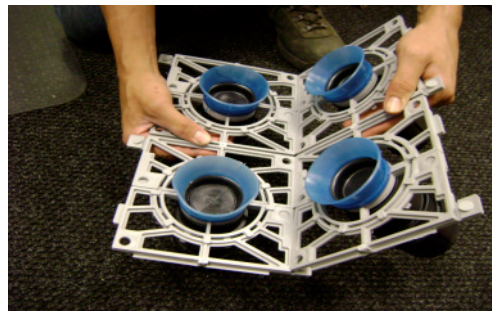
USING ONE FULL UNCUT BRACKET AND ONE END CAP, SNAP THEM TOGETHER AROUND THE 2" OR 3" TERMINATOR.

STEP 4



TO COMPLETE THE PANEL STRIP, ADD ANOTHER TERMINATOR AND END CAP.

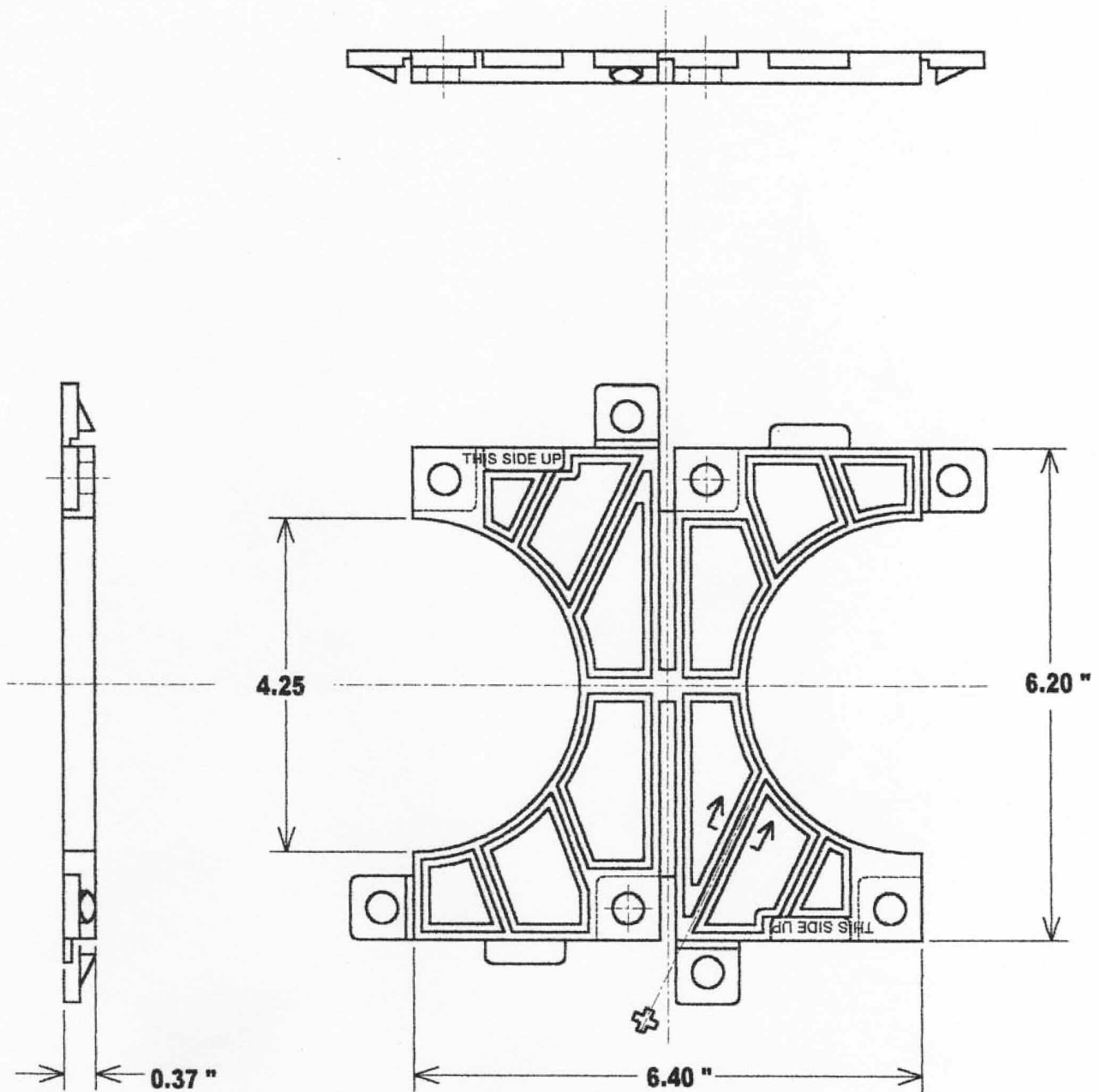
STEP 5



TO MAKE LARGER PANELS, REPEAT STEPS 1 THROUGH 4. REFER TO B400 PANEL INSTRUCTIONS STEP 5.

B230 BRACKET CAN BE USED WITH THE B400 OR THE B456 BRACKETS

U.S. PATENT 6715247



TERMINATOR BRACKET

PART NO. B400 for use with 4" Terminator

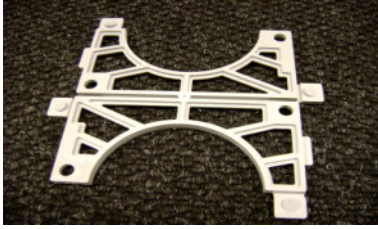
MEADOW BURKE

(877) 518-7665

MeadowBurke.com

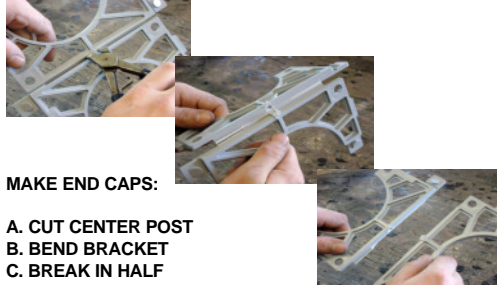
PANEL ASSEMBLY FOR B400 BRACKET

B400 BRACKET



THE BRACKET HAS 6 1/4" CENTER TO CENTER SPACING AND IS READY FOR 4" TERMINATORS.

STEP 1



MAKE END CAPS:

- A. CUT CENTER POST
- B. BEND BRACKET
- C. BREAK IN HALF

THESE WILL BE USED ON THE ENDS OF THE PANEL STRIPS.

STEP 2



USING ONE FULL UNCUT B400 BRACKET AND ONE END CAP, SNAP THEM TOGETHER AROUND THE 4" TERMINATOR.

STEP 3



ADD ANOTHER B400 BRACKET AND ANOTHER 4" TERMINATOR TO MAKE A STRIP.

STEP 4



TO COMPLETE THE STRIP, ADD THE OTHER END CAP FROM THE CUT B400 BRACKET.

STEP 5



ASSEMBLE THE STRIPS BY LINING UP THE MALE AND FEMALE TABS, HOLD AT 45 DEGREES AND PRESS DOWN ON THE PANEL.

B400 ASSEMBLY OF PANEL (cont.)

STEP 6



HOLD PRESSURE ON THE TABS AND PRESS DOWN ON THE PANEL UNTIL YOU HEAR IT CLICK.

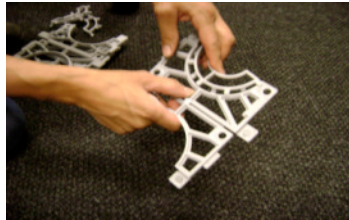
STEP 7



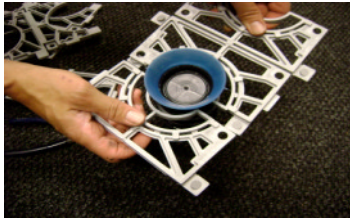
CHECK ALL TABS FOR A GOOD TIGHT FIT. PANEL IS READY FOR YOUR FORM.

THIS

OPTIONS



YOU CAN ADD 2" AND 3" TERMINATORS TO YOUR PANEL BY SNAPPING IN A B230 BRACKET.

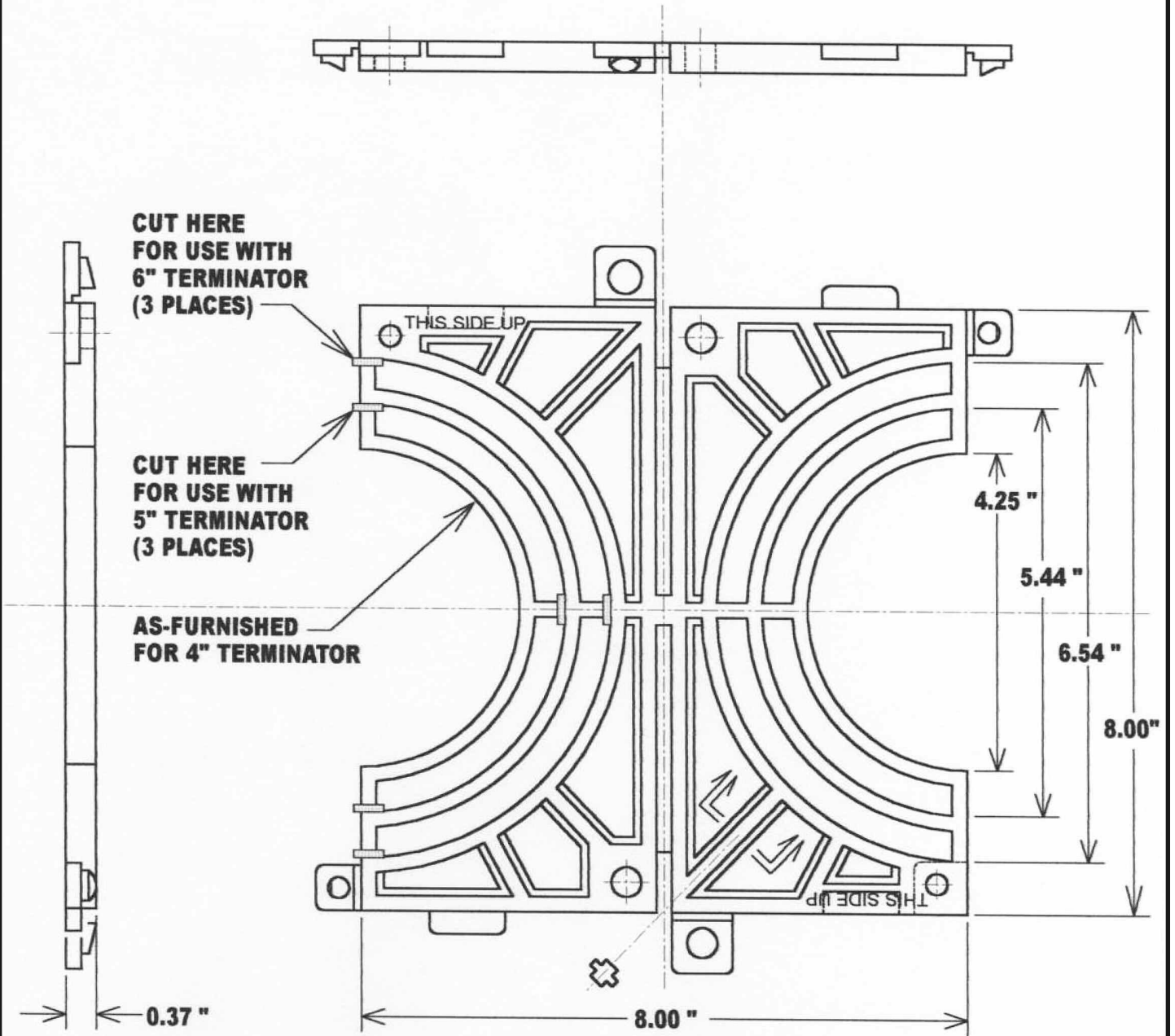


FOLLOW STEPS 1 THROUGH 7 ABOVE TO SNAP 2" AND 3" TERMINATORS TO YOUR PANELS.

IN

FOR MORE DETAILS TO USE THE B230 SEE THE B230 PANEL ASSEMBLY INSTRUCTIONS.

U.S. PATENT No. 6715247
U.S. PATENT No. 7281356



TERMINATOR BRACKET

PART NO. B456 for use with 4, 5, 6" Terminator

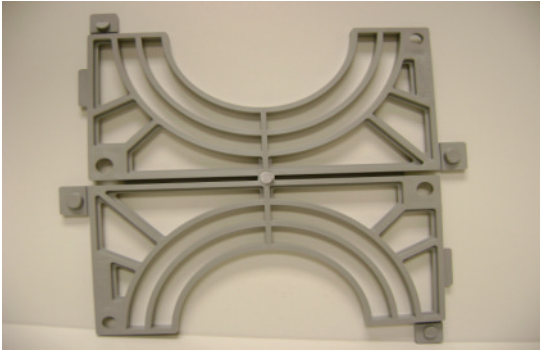
MEADOW BURKE

(877) 518-7665

MeadowBurke.com

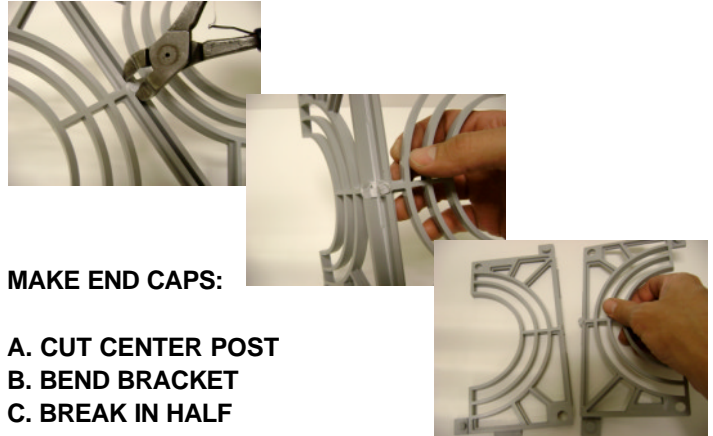
PANEL ASSEMBLY FOR B456 BRACKET

B456 BRACKET



THE BRACKET HAS 8" CENTER TO CENTER SPACING AND IS READY FOR 4" TERMINATORS. THE BRACKET CAN BE CUT FOR USE WITH 5" AND 6" TERMINATORS.

STEP 1

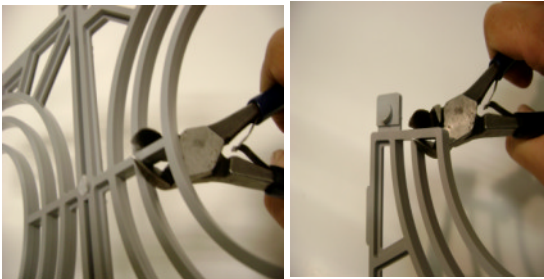


MAKE END CAPS:

- A. CUT CENTER POST
- B. BEND BRACKET
- C. BREAK IN HALF

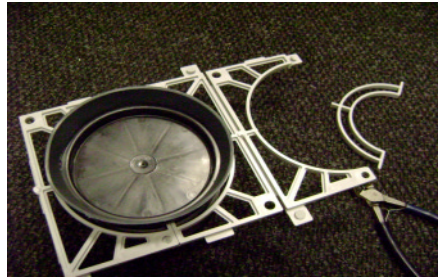
THESE WILL BE USED ON THE ENDS OF THE PANEL STRIPS.

STEP 2



CUT SECOND RING IN FROM CENTER FOR 5" TERMINATORS AND THIRD RING FOR 6" TERMINATORS. CUT ALL THREE SECTIONS.

STEP 3



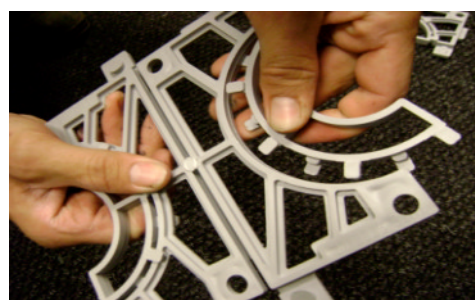
USING ONE FULL UNCUT B456 BRACKET AND ONE END CAP, SNAP THEM TOGETHER AROUND THE 5" TERMINATOR. THIS PHOTO SHOWS A FULL BRACKET CUT FOR 5" AND 6" TERMINATORS.

STEP 4



ADD ANOTHER TERMINATOR AND THE OTHER END CAP FROM THE CUT B456 BRACKET. THIS PANEL IS READY FOR YOUR FORM.

OPTIONS



AS WITH THE B400 BRACKET, THE B230 BRACKET FITS TO THE B456 BRACKET. THIS LETS YOU ADD 2" AND 3" TERMINATORS TO YOUR PANEL.

For more detail see B400 and B230 assembly instructions.