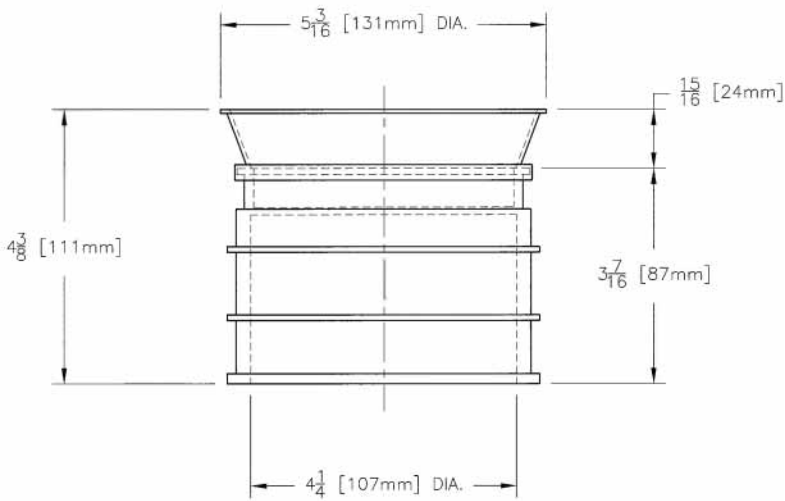
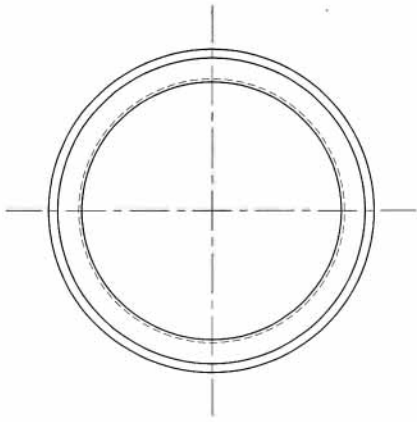


## DB2 Terminator



Our precision manufactured terminator is available in a 110 mm height with a flexible seal ring, designed to keep concrete out of the terminator opening and provide a smooth edge for pulling cables. The DB2 Terminator will accept a DB2 metric pipe (100mm opening).

### FEATURES & BENEFITS

- **Saves Time & Money:** It currently takes three people in the field to install piping into vaults. With the DB2 Terminator, the contractor will only need one person on the outside of the structure to install and glue the pipe into the terminator.
- **Improved Performance:** Made with a flexible seal ring to keep concrete out of the terminator opening and provide a smooth edge for pulling cables.
- **Improved Aesthetics:** Comes in a sleek black look.



BC100120

