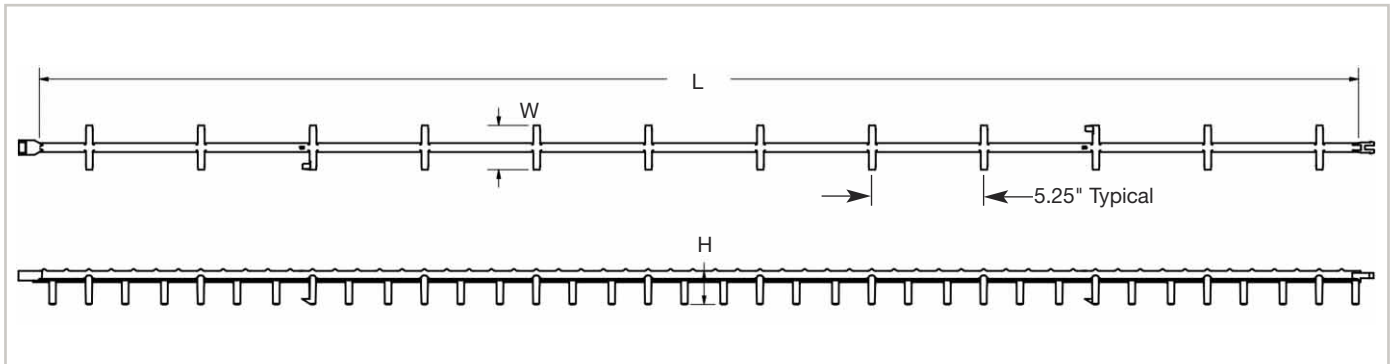


Tuff Plus SB – Slab Bolster

MeadowBurke.com



TUFF PLUS SB – SLAB BOLSTER DATA

Item Number	Height (H)	Width (W)	Length (L)	Feet per Bundle	Weight per Bundle (lbs)	Feet per Pallet
MBTSB075	3/4"	1 3/4"	60"	100	7.23	14,400
MBTSB100	1"	1 13/16"	60"	100	7.76	10,000
MBTSB125	1 1/4"	1 7/8"	60"	100	8.90	9,000
MBTSB150	1 1/2"	2"	60"	100	9.48	7,200
MBTSB175	1 3/4"	2 1/16"	60"	100	9.70	6,400
MBTSB200	2"	2 3/16"	60"	100	10.00	5,600
MBTSB250	2 1/2"	2 5/16"	60"	100	11.40	5,200
MBTSB300	3"	2 1/2"	60"	100	12.70	4,200

NOTE 1: Legs are spaced at 1 1/2". This product may be used in lieu of BB Beam Bolster. BB Beam Bolster leg space = 2 1/2"

The Tuff Plus SB - Slab Bolster is a composite slab bolster that is used to provide accurate cover for lower mats of steel reinforcement in concrete elements. Suitable for a wide range of uses, the Tuff Plus SB - Slab Bolster can be used in Tilt-Up Concrete Construction, Precast Concrete Construction, Post Tensioned Concrete and other Cast in place applications. The Tuff Plus SB, all plastic slab bolster, may also be used as side form spacers in vertical formwork.

The Tuff Plus SB Slab Bolster is fabricated from fiber filled gray composite material designed to blend with the concrete surface, if exposed. Top bar corrugations are placed on 1" centers to visually aid rebar placement. The Tuff Plus SB plastic slab bolster is manufactured in true 60" lengths, eliminating assembly and expedites field placement.



- Manufactured with proprietary thermoplastic blends designed for excellent performance
- Manufactured in true 60" lengths and requires no assembly
- Delivered in 100 ft Bundles provide easy storage / placement
- Meet or exceeds typical DOT specifications
- Does not inhibit concrete flow
- Available in heights from 3/4" to 3"
- Design to perform in extreme temperatures
- Meets CRSI class 1 and load class requirements
- Marked with manufacturer and height for easy identification

