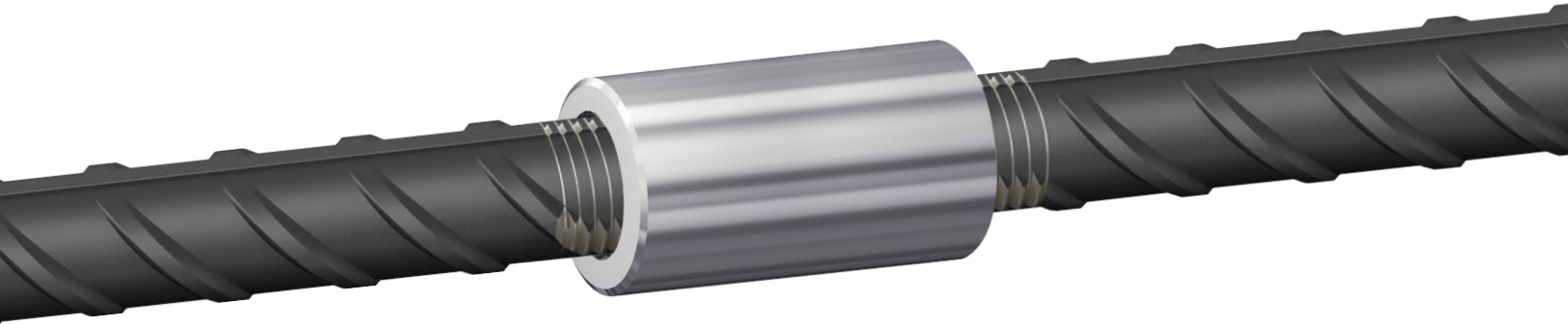
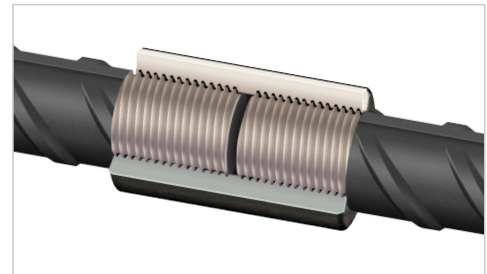


# BT Couplers

## Type 1 & Type 2HS Rebar Splicing System

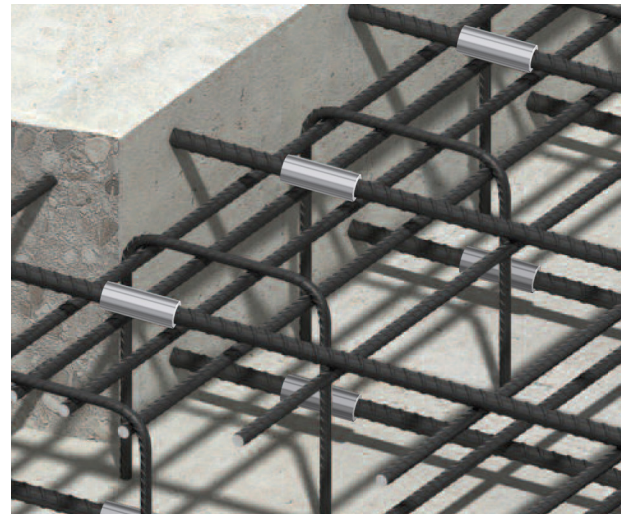


Meadow Burke BT Couplers are versatile and robust Type 1 & Type 2HS Splicing Systems used to mechanically connect rebar sections in segmental pours as an alternative to traditional dowel bars. The three-part system consists of a Splice Bar, Coupler and Setting Bar that meets the mechanical splice strength requirements of ACI-318-19 when used to splice grade 60 rebar.



### FEATURES

- Improved performance: Exceeds ACI-318-19 Type 1 & Type 2HS splice requirements and maintains reinforcing steel continuity independent of concrete cover.
- Saves time and money: Reduces costly form repairs by eliminating drilling of forms and simplifies form stripping.
- Available in standardized lengths (sizes #4 – #11) and configured to order.



### BT COUPLERS SPLICING PERFORMANCE

Bar Size	Nominal Area (inch <sup>2</sup> )	Grade 60 Rebar Yield Strength (lbs)	Type 1 125% Yield Strength (lbs)	Type 2HS 90 KSI Tensile Strength (lbs)*
#4	0.20	12,000	15,000	18,000
#5	0.31	18,600	23,250	27,900
#6	0.44	26,400	33,000	39,600
#7	0.60	36,000	45,000	54,000
#8	0.79	47,400	59,250	71,100
#9	1.00	60,000	75,000	90,000
#10	1.27	76,200	95,250	114,300
#11	1.56	93,600	117,000	140,400

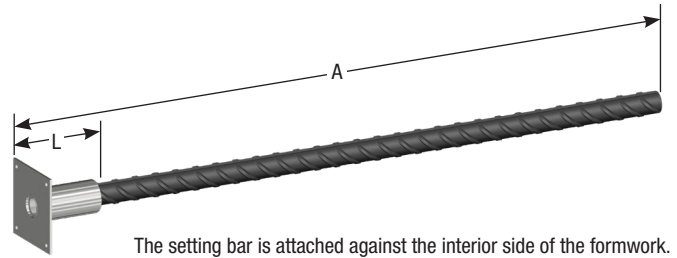
\*ASTM A615 and A706 compliant

# The Three-part Mechanical Connect System

## STANDARD LENGTH SETTING BARS

Type I Item Number	Type II Item Number	Rebar Size	Grade 60 Finish: Plain	"A" Length (inch)
	MBR2610430F	#4	RC-61-T2 Setting Bar	30"
	MBR2610448F	#4	RC-61-T2 Setting Bar	48"
	MBR2610530F	#5	RC-61-T2 Setting Bar	30"
Contact	MBR2610536F	#5	RC-61-T2 Setting Bar	36"
Meadow Burke	MBR2610548F	#5	RC-61-T2 Setting Bar	48"
	MBR2610636F	#6	RC-61-T2 Setting Bar	36"
	MBR2610648F	#6	RC-61-T2 Setting Bar	48"
	MBR2610760F	#7	RC-61-T2 Setting Bar	60"

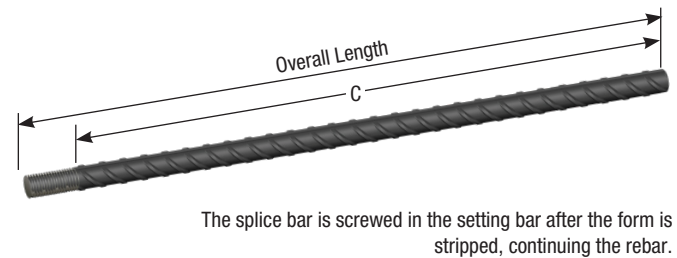
Additional lengths are available for Type I & II upon request



## STANDARD LENGTH SPLICE BARS

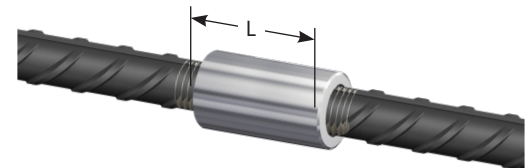
Type I Item Number	Type II Item Number	Rebar Size	Grade 60 Finish: Plain	"C" Length (inch)
	MBR2610430M	#4	RC-61-T2 Splice Bar	30"
	MBR2610448M	#4	RC-61-T2 Splice Bar	48"
	MBR2610530M	#5	RC-61-T2 Splice Bar	30"
Contact	MBR2610536M	#5	RC-61-T2 Splice Bar	36"
Meadow Burke	MBR2610548M	#5	RC-61-T2 Splice Bar	48"
	MBR2610636M	#6	RC-61-T2 Splice Bar	36"
	MBR2610648M	#6	RC-61-T2 Splice Bar	48"
	MBR2610760M	#7	RC-61-T2 Splice Bar	60"

Additional lengths are available for Type I & II upon request



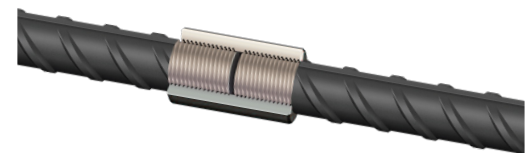
## TYPE I COUPLER DETAIL

Standard Coupler PN# (plain finish)	Flange Coupler PN# (plain finish)	Rebar Size	Couple Thread Size	"L" Length (inch)	Diameter (inch)	Weight (lbs.)
MB860501	MB860502	#4	1/2-13 UNC	1.875	0.875	0.24
MB860651	MB860652	#5	5/8-11 UNC	2.125	1.000	0.34
MB860801	MB860802	#6	3/4-10 UNC	2.250	1.125	0.41
MB860951	MB860952	#7	7/8-9 UNC	2.625	1.250	0.57
MB861101	MB861102	#8	1-8 UNC	3.250	1.500	1.08
MB861251	MB861252	#9	1-1/8-7 UNC	3.750	1.625	1.39
MB861401	MB861402	#10	1-1/4-7 UNC	4.250	2.000	2.61
MB861551	MB861552	#11	1-3/8-6 UNC	4.750	2.000	2.66



## TYPE II COUPLER DETAIL

Standard Coupler PN# (plain finish)	Flange Coupler PN# (plain finish)	Rebar Size	Couple Thread Size	"L" Length (inch)	Diameter (inch)	Weight (lbs.)
MB860551	MB860552	#4	5/8-11 UNC	1.250	1.000	0.17
MB860681	MB860682	#5	3/4-10 UNC	1.625	1.125	0.25
MB860851	MB860852	#6	7/8-9 UNC	2.250	1.250	0.40
MB860981	MB860982	#7	1-8 UNC	2.500	1.500	0.70
MB861151	MB861152	#8	1-1/8-8 UN	2.750	1.625	0.88
MB861281	MB861282	#9	1-1/4-8 UN	3.000	2.000	1.70
MB861451	MB861452	#10	1-7/16-8 UN	3.250	2.125	1.84
MB861581	MB861582	#11	1-9/16-8 UN	3.625	2.250	2.19



BT Couplers are sold as an engineered component system, proof tested and third party certified. Under no circumstances will Meadow Burke permit the mixing other manufactures splicing parts with genuine MB components.

For more information on BT Couplers please contact  
 CUSTOMER SERVICE at (800) 518-7665 or visit [www.MeadowBurke.com](http://www.MeadowBurke.com)

Email: [info@leviat.us](mailto:info@leviat.us)  
 Web: [www.leviat.com](http://www.leviat.com)